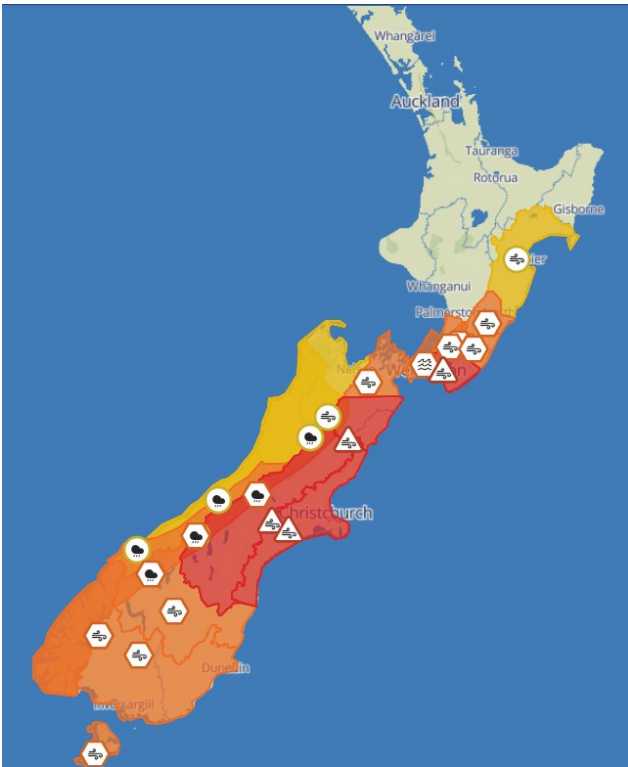


Details				
<b>NCC location</b>	NHQ	<b>Date:</b>	23/10/2025	<b>0930</b>
<b>Prepared by:</b> Name and role	Adrian Nacey NCC Intel	<b>Issued by:</b> Name and role	Adrian Nacey National Coordination Centre Intel	

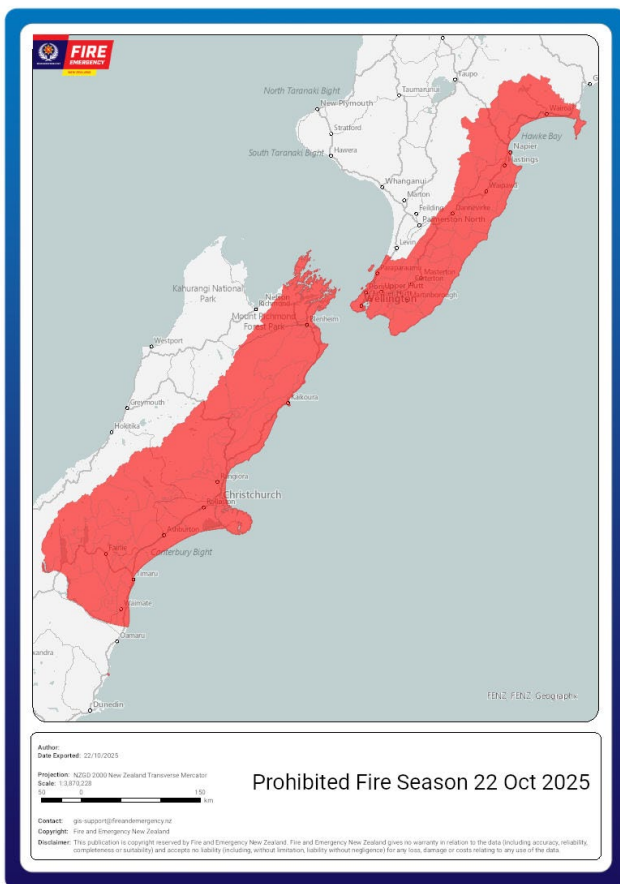
Current Situation and Key Points	
<ul style="list-style-type: none"> <li>• Fire and Emergency currently has crews tackling fires at incidents across Canterbury and Hawkes Bay that have been burning since Tuesday 21 October.</li> <li>• As at 0930 on 23 October Fire and Emergency are seeing an increase in non-fire weather-related incidents occurring across the Canterbury and Wellington. Between 0740 and 0930 today, Fire and Emergency responded to 34 weather-related callouts.</li> <li>• Fire and Emergency has regional coordination centres operating in Christchurch, Wellington and Tauranga. The Fire and Emergency National Coordination Centre in Wellington is currently operating also.</li> <li>• The roads between through the main divide of the South Island are all closed as at 0930 on 23 October 2025 (except the Haast Pass).</li> <li>• Red weather warnings are in place for Canterbury (wind and rain) and Wellington (wind). See map below for other warnings.</li> <li>• Fire and Emergency has issued a total fire prohibition under Section 52 of the Fire and Emergency Act prohibiting all fires in the open air for Canterbury, Wellington and up to Hawkes Bay (see map below for areas covered).</li> <li>• Fire and Emergency are asking every landowner, agricultural contractor, forestry manager and lifestyle block owner to help us avoid any more fires starting, and please check any old burn piles to ensure they are fully extinguished.</li> <li>• Parts of the South Island are currently without power.</li> <li>• Airports across the country are disrupted. Bluebridge have cancelled some sailings today, but Interislander are operating as at 0930.</li> <li>• Due to current conditions aerial firefighting operations are going to be extremely limited or not possible if required.</li> <li>• A State of Emergency has been declared in Canterbury.</li> </ul>	

## Conditions

Current Weather warnings as at 0900 23/10/2025



Current Section 52 fire prohibitions as at 0900 23 October 2025

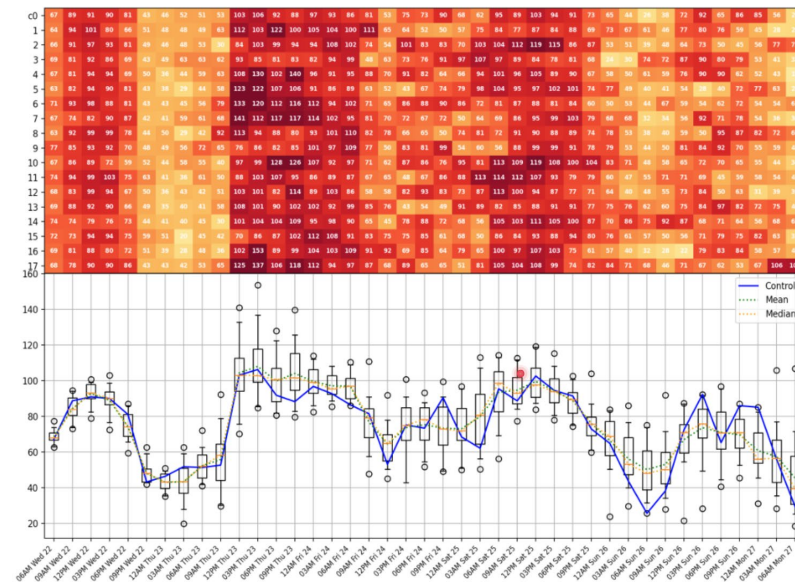


## Appendix 1 – location weather information (south to North)

### INVERCARGILL

## Forecast Wind Gust

NZENS | Init: 15 UTC 21/10/25 | 3H max wind speed of gust (km/h) | Location: Invercargill (-46.4, 168.4)

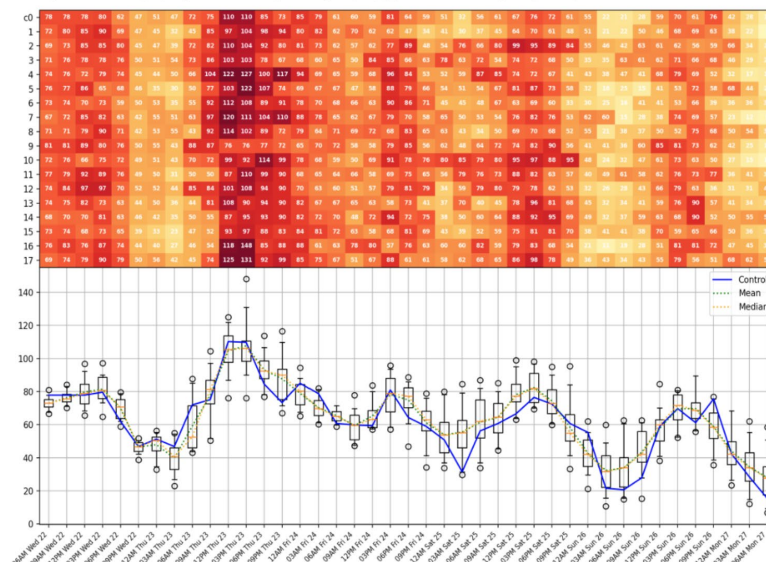


Invercargill could see high wind gusts over 100 km/h for a prolonged period from noon Thursday to Midnight Friday, or even to 0600 Friday.

### GORE

## Forecast Wind Gust

NZENS | Init: 15 UTC 21/10/25 | 3H max wind speed of gust (km/h) | Location: Gore (-46.1, 168.9)

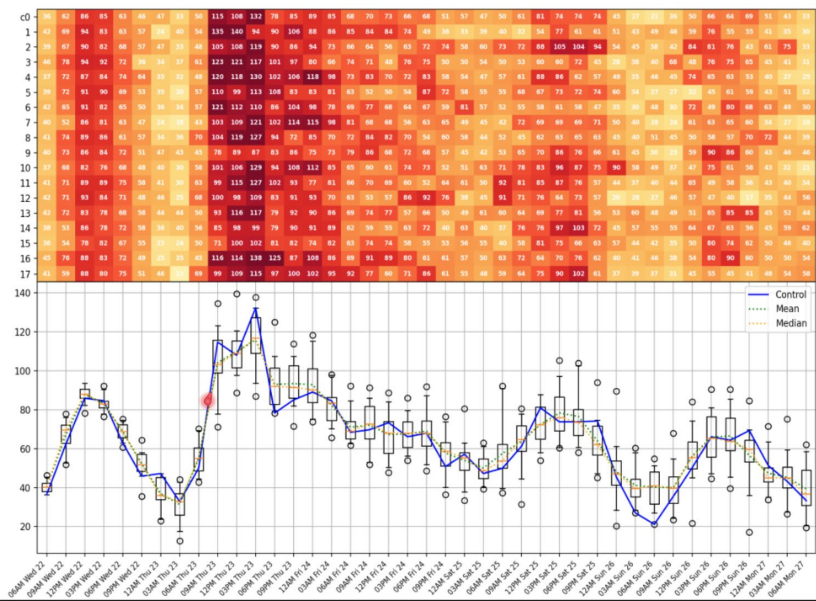


Gore may see wind gusts over 100-120 km/h for about a 6 hours between noon and 1800, with winds easy but still blustery

DUNEDIN

Forecast Wind Gust

NZENS | Init: 15 UTC 21/10/25 | 3H max wind speed of gust (km/h) | Location : Dunedin (-45.9, 170.5)

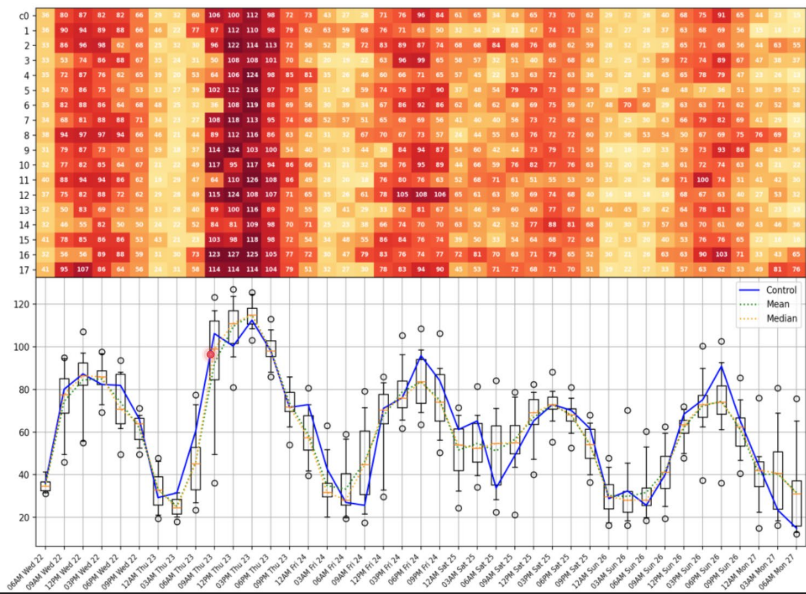


Dunedin could see wind gusts 100-130 km/h with the worst expected from about 0900 to 1500

TIMARU

Forecast Wind Gust

NZENS | Init: 15 UTC 21/10/25 | 3H max wind speed of gust (km/h) | Location : Timaru (-44.4, 171.2)



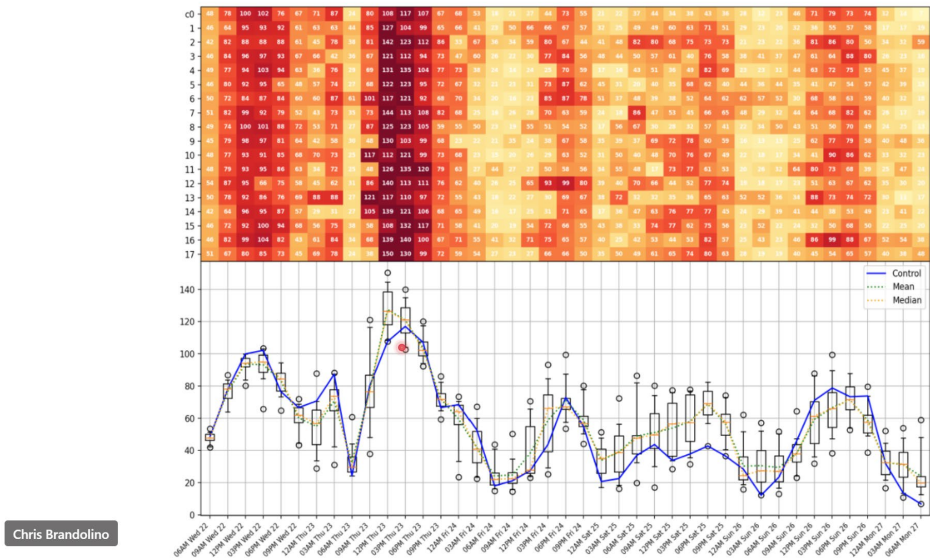
Timaru can expect maximum wind gusts of 100 – 120 km/h with the worst expected 0900 to 1500hrs



ASHBURTON

Forecast Wind Gust

NZENS | Init: 15 UTC 21/10/25 | 3H max wind speed of gust (km/h) | Location: Ashburton (-43.9, 171.8)

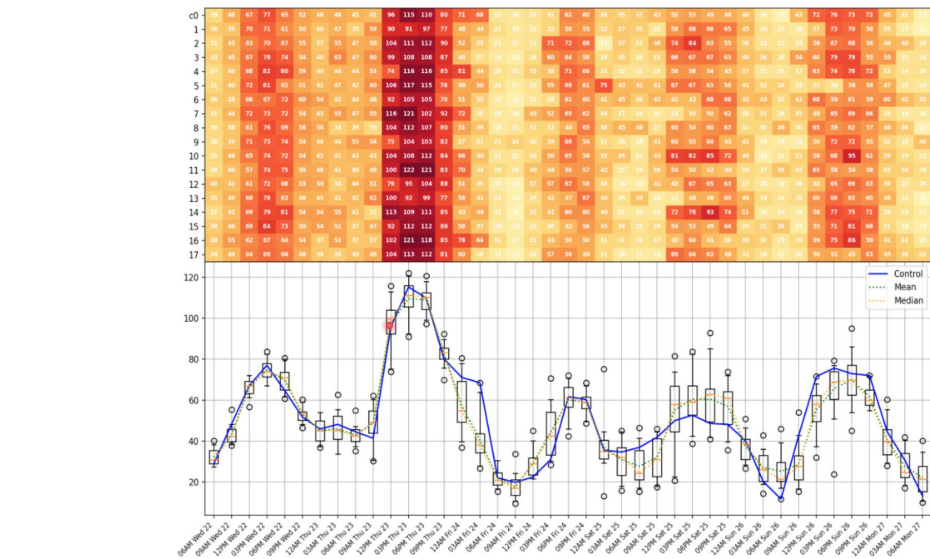


Ashburton could see maximum wind gusts of 110-140 km/h with the worst period 1200 – 1800 hrs

CHRISTCHURCH

Forecast Wind Gust

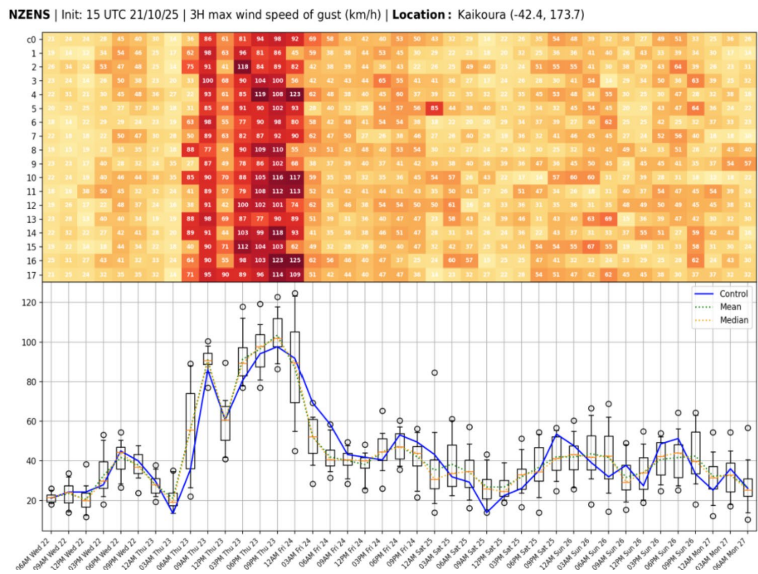
NZENS | Init: 15 UTC 21/10/25 | 3H max wind speed of gust (km/h) | Location: Christchurch (-43.5, 172.6)



Christchurch could see maximum gusts of 100-120 km/h with the worst of it between 1200 and 1800hrs

KAIKOURA

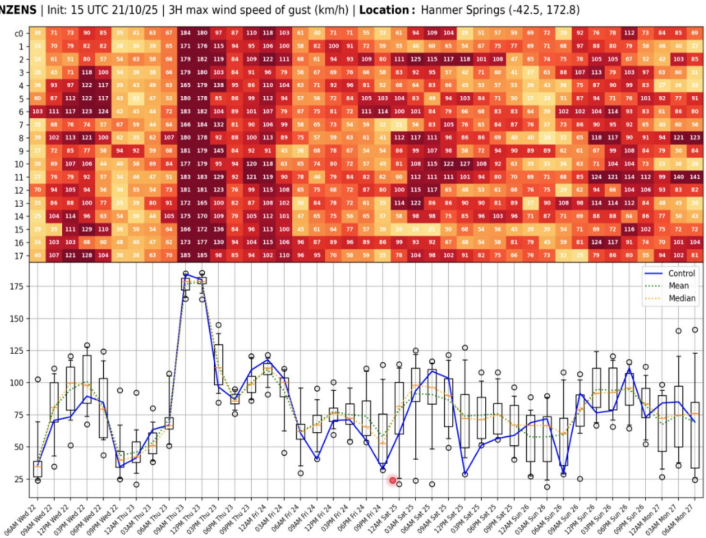
Forecast Wind Gust



Kaikoura has much more variation of the maximum gust speeds, but the maximum likely to be 100-120 km/h somewhere 0900 to 0000 Friday, with more potential than other places to have their worst patch in the evening (1800 to 0000)

HANMER SPRINGS

Forecast Wind Gust



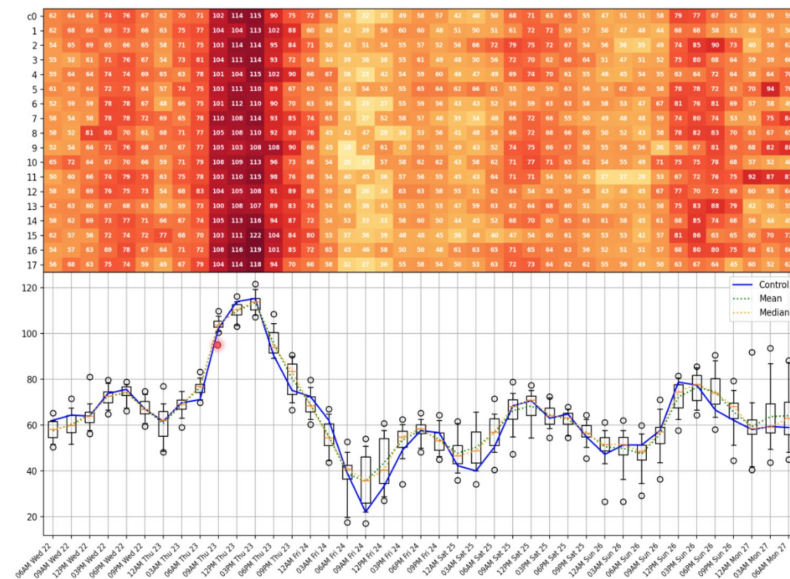
Chris Brandolino

Hanmer Springs have one of the most concerning predictions, with maximum wind gusts quickly escalating to 130 – 180 Km/h in the period of 0900 to 1500, with a possible second wave 2100 into Friday 0300. It must be noted that the forecast point is 200m above Hanmer Springs. While seemingly unthinkable, there is potential for wind gusts over 160 km/h to occur.

## WELLINGTON

### Forecast Wind Gust

NZENS | Init: 15 UTC 21/10/25 | 3H max wind speed of gust (km/h) | Location: Wellington (-41.3, 174.8)

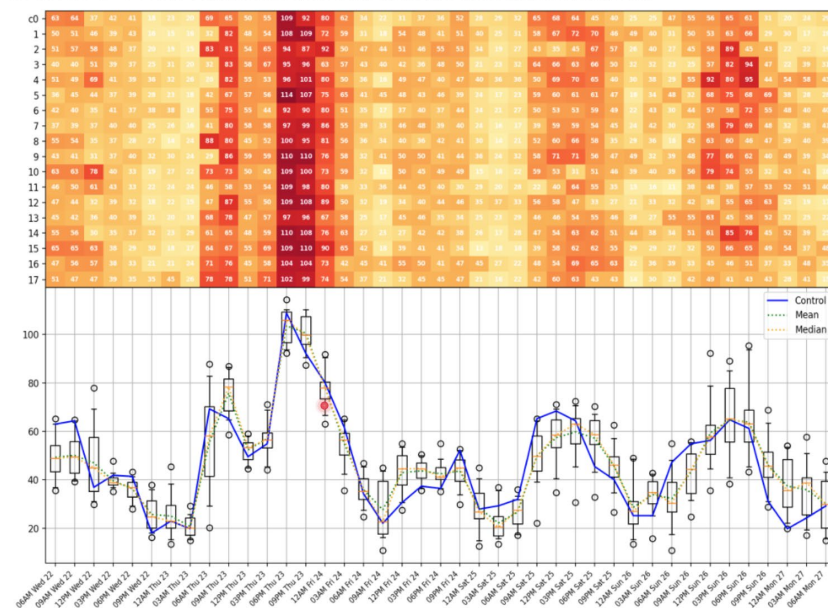


Wellington looks to have a fairly consistent prediction of 100- 120 km/h maximum gusts between 0900 and 1800, tapering off in the later evening

## MASTERTON

### Forecast Wind Gust

NZENS | Init: 15 UTC 21/10/25 | 3H max wind speed of gust (km/h) | Location: Masterton (-40.9, 175.7)



Masterton is likely to have maximum wind gusts of 100-110 km/h in the window of 1800 to 2100 hours